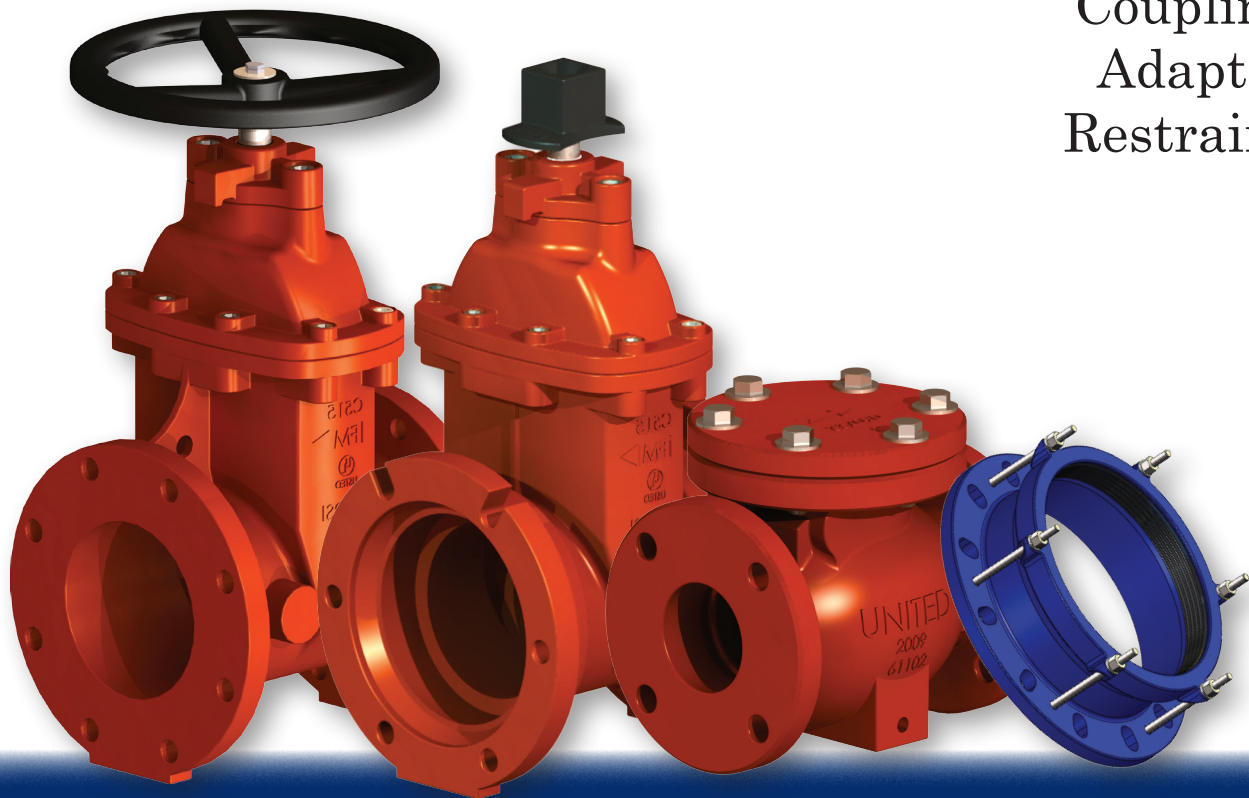


UNITED WATER PRODUCTS

AWWA PRODUCTS LIST PRICE SHEET Effective 5-1-16

Gate Valves
Check Valves
Couplings
Adapters
Restrains



UNITED Water Products

Tel: (877) 766-4459

2113 W. 30th Street, Jacksonville, FL 32209

• Fax: (877) 766-4458 •

www.unitedwaterproducts.com

Terms and Conditions

The purchase and sale of merchandise between the parties is expressly subject to the following terms and conditions:

WARRANTY

All orders are subject to approval and acceptance by United Water Products (herein referred to as "UWP"). UWP warrants its products to have no defects in workmanship and materials used under normal service and when used for the purposes and under the conditions for which they are designed, for a period of one year from the date of shipment. No claims will be honored unless claim is made within (45) days of the defect being found. Obligation under the warranty is limited, at UWP's option, to adjust, repair or replace, F.O.B. point to sale, the defective parts. Purchaser must immediately notify UWP. UWP shall have the right to inspect said product and purchaser shall, if requested, assume all responsibility and expenses for removal and reinstallation and freight charges in connection with the foregoing remedy. UWP shall not be liable for indirect, special, incidental or consequential damage or penalties and does not assume any liability of purchase to others, or to anyone for injury to persons or property. Sellers Warranty shall be strictly limited to repair or replacement of the merchandise found to be defective.

INSURANCE

All merchandise shipped to the buyer shall be done so with the buyer assuming the risk of loss or damage during transit. Insurance, if desired, shall be the responsibility of the buyer. UWP will make every effort to make delivery without a time specified. Any delay in meeting shipping schedules will not make UWP liable for the damages of any kind.

CREDIT

In consideration of extending credit, the buyer authorizes the seller to investigate references and obtain credit reports. The buyer agrees to pay for all merchandise signed for by its employees and/or agents until seller is otherwise notified in writing. The buyer agrees to pay interest at the rate of 18% per annum on past due accounts along with reasonable attorney fees and other costs of collection incurred by seller in collecting overdue accounts.

RETURNS

All sales are considered final at seller's opinion. If consent to make returns is granted, a 25% fee for restocking will be charged against any credit given. Buyer is responsible for all freight charges on returns.

PRICING

All prices are exclusive of taxes. Buyer is liable for any taxes, fees, or penalties levied. Buyer shall furnish seller a copy of their resale certificate. All material will be invoiced at prices in effect on date of shipment. Prices are subject to change without notice. All sales are F.O.B. point of shipping. Any damage or shortage must be noted on delivery bill of lading or our packing list and acknowledged by delivering carrier's agent. Any claims for damage or shortage must be made in writing within 7 days of receipt of material. Customer satisfaction is our priority. Please make your claims for adjustments within 10 days. Defective merchandise will be replaced or credited as applicable.

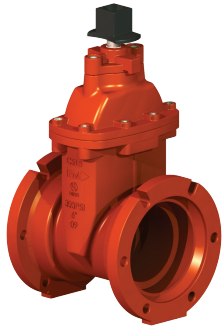
FREIGHT ALLOWANCE

Orders exceeding \$15,000 List are FFA within the Continental U.S.A.

SPECIAL ORDERS

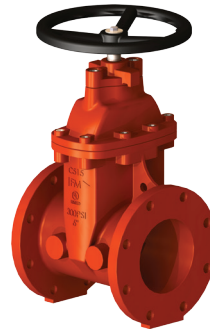
Orders concerning special or non-standard products are not subject to cancellation on such terms as seller may specify.

AWWA C515
Ductile Iron Resilient Seat
Gate Valves, NRS



Mechanical Joint x Mechanical Joint

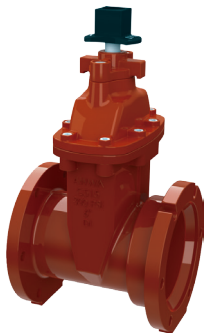
Size	Part No.	List Each L/Acc.	List Each W/MJ Acc.	Est. Shipping Wgt. (lbs.)
2"	2010MM-120	\$ 565.00	\$ 603.40	35
3"	2010MM-130	\$ 657.00	\$ 697.80	48
4"	2010MM-140	\$ 785.00	\$ 840.00	60
6"	2010MM-160	\$ 1,202.00	\$ 1,257.00	105
8"	2010MM-180	\$ 1,954.00	\$ 2,040.00	165
10"	2010MM-200	\$ 2,930.00	\$ 3,054.00	272
12"	2010MM-220	\$ 4,165.00	\$ 4,293.00	364
14"	2010MM-240	\$11,355.00	\$11,555.00	582
16"	2010MM-260	\$15,165.00	\$15,478.00	751
18"	2010MM-280	\$20,995.00	\$21,351.00	1091
20"	2010MM-300	\$26,850.00	\$27,248.00	1166
24"	2010MM-340	\$36,565.00	\$37,125.00	1993



*Specify "R" for Open Right

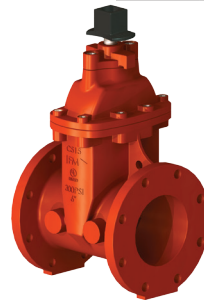
Flange x Flange

Size	Part No.	List Each L/Acc.	Est. Shipping Wgt. (lbs.)
2"	2010FF-120	\$ 565.00	35
2-1/2"	2010FF-125	\$ 590.00	38
3"	2010FF-130	\$ 657.00	48
4"	2010FF-140	\$ 785.00	60
6"	2010FF-160	\$ 1,202.00	105
8"	2010FF-180	\$ 1,954.00	165
10"	2010FF-200	\$ 2,930.00	272
12"	2010FF-220	\$ 4,165.00	364
14"	2010FF-240	\$11,355.00	582
16"	2010FF-260	\$15,165.00	751
18"	2010FF-280	\$20,995.00	1091
20"	2010FF-300	\$26,850.00	1166
24"	2010FF-340	\$36,565.00	1993



Flange x Mechanical Joint

Size	Part No.	List Each L/MJ Acc.	List Each W/MJ Acc.	Est. Shipping Wgt. (lbs.)
3"	2010FM-130	\$ 695.00	\$ 715.40	46
4"	2010FM-140	\$ 785.00	\$ 812.50	56
6"	2010FM-160	\$1,202.00	\$1,239.50	100
8"	2010FM-180	\$1,954.00	\$1,997.00	160
10"	2010FM-200	\$2,930.00	\$2,992.00	263
12"	2010FM-220	\$4,165.00	\$4,229.00	350



Tapping Valves w/Flg. Side Acc.

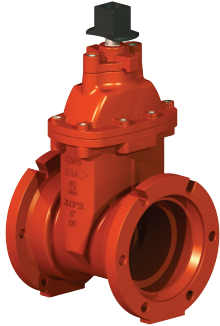
Size	Part No.	List Each L/Acc.	List Each W/Acc.	Est. Shipping Wgt. (lbs.)
4"	2010TM-140	\$ 790.00	\$ 817.50	56
6"	2010TM-160	\$1,160.00	\$1,197.50	100
8"	2010TM-180	\$1,952.00	\$1,995.00	160
10"	2010TM-200	\$3,080.00	\$3,142.00	263
12"	2010TM-220	\$4,780.00	\$4,844.00	350

AWWA PRODUCTS

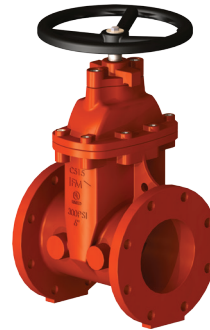
List Price Sheet, Effective 5-1-16



AWWA C515
NRS -Ductile Iron
Resilient Seated Gate Valves
250 PSI WWP



Mechanical Joint x Mechanical Joint



Flange x Flange

Size	Part No.	List Each L/Acc.	List Each W/Acc.	Est. Shipping Wgt. (lbs.)
3"	1010MM-130	\$ 511.00	\$ 551.80	42
4"	1010MM-140	\$ 624.00	\$ 680.00	61
6"	1010MM-160	\$ 834.00	\$ 909.00	124
8"	1010MM-180	\$ 1,584.00	\$ 1,670.00	197
10"	1010MM-200	\$ 2,006.00	\$ 2,130.00	266
12"	1010MM-220	\$ 3,086.00	\$ 3,214.00	394
14"	1010MM-240	\$ 6,800.00	\$ 7,000.00	596
16"	1010MM-260	\$ 7,185.00	\$ 7,498.00	660
18"	1010MM-280	\$ 8,888.00	\$ 9,244.00	968
20"	1010MM-300	\$13,350.00	\$13,748.00	1298
24"	1010MM-340	\$22,540.00	\$23,100.00	1696

Size	Part No.	List Each L/Acc.	Est. Shipping Wgt. (lbs.)
3"	1010FF-130	\$ 511.00	42
4"	1010FF-140	\$ 624.00	61
6"	1010FF-160	\$ 834.00	124
8"	1010FF-180	\$ 1,584.00	197
10"	1010FF-200	\$ 2,006.00	266
12"	1010FF-220	\$ 3,086.00	394
14"	1010FF-240	\$ 6,800.00	596
16"	1010FF-260	\$ 7,185.00	660
18"	1010FF-280	\$ 8,888.00	968
20"	1010FF-300	\$13,350.00	1298
24"	1010FF-340	\$24,795.00	1696
*30"	1010FF-400	\$44,500.00	5680
*36"	1010FF-460	\$52,895.00	7100

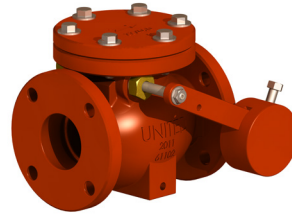
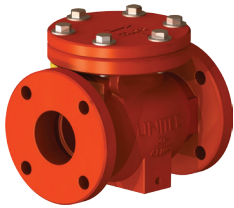
*These sizes supplied with manual gear operators.

Thread x Thread
For IPS Pipe

Size	Part No.	List Each	Est. Shipping Wgt. (lbs.)
2"	1010TT-120	\$292.00	15
2-1/2"	1010TT-125	\$420.00	32
3"	1010TT-130	\$478.00	34
4"	1010TT-140	\$656.00	48

*Specify with Operating Nut or Handwheel when ordering.

AWWA C508
United Check Valves



Size	Part No.	Est. Shipping Wgt. (lbs.)	List Each
2"	7700-F-120	32	\$ 315.00
2-1/2"	7700-F-125	42	\$ 375.00
3"	7700-F-130	60	\$ 472.00
4"	7700-F-140	92	\$ 710.00
6"	7700-F-160	111	\$ 1,260.00
8"	7700-F-180	292	\$ 1,795.00
10"	7700-F-200	528	\$ 3,205.00
12"	7700-F-220	728	\$ 4,775.00
14"	7700-F-240	1210	\$11,486.00
16"	7700-F-260	1635	\$18,238.00
18"	7700-F-280	1888	\$22,340.00
20"	7700-F-300	2442	\$26,340.00
24"	7700-F-340	3870	\$36,570.00

Size	Part No. (Lever & Wgt.)	Part No. (Lever & Spring)	Est. Shipping Wgt. (lbs.)	List Each
2"	7700-F-120-LW	7700-F-120-LS	42	\$ 510.00
2-1/2"	7700-F-125-LW	7700-F-125-LS	51	\$ 630.00
3"	7700-F-130-LW	7700-F-130-LS	70	\$ 769.00
4"	7700-F-140-LW	7700-F-140-LS	111	\$ 985.00
6"	7700-F-160-LW	7700-F-160-LS	165	\$ 1,562.00
8"	7700-F-180-LW	7700-F-180-LS	320	\$ 2,588.00
10"	7700-F-200-LW	7700-F-200-LS	570	\$ 3,980.00
12"	7700-F-220-LW	7700-F-220-LS	720	\$ 5,130.00
14"	7700-F-240-LW	7700-F-240-LS	1272	\$11,720.00
16"	7700-F-260-LW	7700-F-260-LS	1721	\$18,610.00
18"	7700-F-280-LW	7700-F-280-LS	1988	\$25,446.00
20"	7700-F-300-LW	7700-F-300-LS	2570	\$33,654.00
24"	7700-F-340-LW	7700-F-340-LS	4074	\$44,533.00



Size	Part No. w/EPDM Disc	Est. Shipping Wgt. (lbs)	List Each
2"	9600E-120	27	\$ 452.00
2-1/2"	9600E-125	35	\$ 535.00
3"	9600E-130	40	\$ 558.00
4"	9600E-140	68	\$ 628.00
6"	9600E-160	128	\$ 975.00
8"	9600E-180	238	\$1,755.00
10"	9600E-200	380	\$3,090.00
12"	9600E-220	620	\$4,278.00
14"	9600E-240	740	\$6,356.00
16"	9600E-260	1035	\$8,530.00

Size	Part No. w/BUNA Disc	Est. Shipping Wgt. (lbs)	List Each
2"	9600B-120	27	\$ 452.00
2-1/2"	9600B-125	35	\$ 535.00
3"	9600B-130	40	\$ 558.00
4"	9600B-140	68	\$ 628.00
6"	9600B-160	128	\$ 975.00
8"	9600B-180	238	\$1,755.00
10"	9600B-200	380	\$3,090.00
12"	9600B-220	620	\$4,278.00
14"	9600B-240	740	\$6,356.00
16"	9600B-260	1035	\$8,530.00

Size	Replacement Disc Assembly	Est. Shipping Wgt. (lbs)	List Each
2"	P96-E01-120	3	\$ 114.70
2-1/2"	P96-E01-125	4	\$ 131.75
3"	P96-E01-130	5	\$ 150.35
4"	P96-E01-140	7	\$ 221.65
6"	P96-E01-160	13	\$ 398.35
8"	P96-E01-180	22	\$ 666.50
10"	P96-E01-200	26	\$ 736.25
12"	P96-E01-220	32	\$ 754.85
14"	P96-E01-240	38	\$1,066.40
16"	P96-E01-260	45	\$1,377.95

AWWA PRODUCTS

List Price Sheet, Effective 5-1-16

**AWWA C504
Butterfly Valves**



Flange x Flange
(w/lever or wheel handle)

Mechanical Joint x Mechanical Joint
(w/gear operator (underground) and operating nut)

Size	Part No.	Est. Shipping Wgt. (lbs.)	List Each
4"	3900F-140	132	\$ 985.00
6"	3900F-160	165	\$1,010.00
8"	3900F-180	181	\$1,250.00
10"	3900F-200	220	\$1,665.00
12"	3900F-220	375	\$2,322.00
14"	3900F-240	452	\$3,110.00
16"	3900F-260	551	\$4,295.00
18"	3900F-280	697	\$5,335.00
20"	3900F-300	1,005	\$7,260.00
24"	3900F-340	1,373	\$9,752.00

Size	Part No.	Est. Shipping Wgt. (lbs.)	List Each
4"	3900M-140	145	\$ 1,015.00
6"	3900M-160	182	\$ 1,080.00
8"	3900M-180	199	\$ 1,350.00
10"	3900M-200	242	\$ 1,832.00
12"	3900M-220	413	\$ 2,952.00
14"	3900M-240	497	\$ 4,686.00
16"	3900M-260	606	\$ 5,400.00
18"	3900M-280	767	\$ 7,253.00
20"	3900M-300	1106	\$ 8,952.00
24"	3900M-340	1510	\$11,482.00

UNIFIT

Couplings, Adapters & Restraints

Wide Range Couplings



Part No.	Flange Inch	Flange DN	OD Range Inch	OD Range mm	List Price w/Carbon Steel Bolts	List Price w/Stainless Steel Bolts
4200-025	2"	50	2.32-2.84	59-72	\$ 78.62	\$ 164.79
4200-030	2-1/2"	65	2.84-3.35	72-85	\$ 85.28	\$ 171.48
4200-035	3"	80	3.46-4.06	88-103	\$ 97.00	\$ 183.79
4200-040	4"	100	4.29-5.04	109-128	\$ 117.12	\$ 205.05
4200-045	5"	125	5.20-5.75	132-146	\$ 149.24	\$ 283.23
4200-050	5/6"	125/150	5.43-6.02	138-153	\$ 157.36	\$ 246.52
4200-055	6"	150	6.26-7.16	159-182	\$ 157.36	\$ 246.45
4200-060	6"	150	7.60-8.26	192-210	\$ 169.92	\$ 259.00
4200-064	8"	200	8.54-9.13	217-232	\$ 212.40	\$ 359.28
4200-065	8"	200	8.58-9.25	218-235	\$ 212.40	\$ 359.28
4200-070	8"	200	9.06-9.72	230-247	\$ 256.62	\$ 474.27
4200-075	10"	250	9.84-10.51	250-267	\$ 284.08	\$ 501.73
4200-080	10"	250	10.70-11.38	272-289	\$ 284.08	\$ 501.73
4200-085	12"	300	12.40-13.07	315-332	\$ 316.86	\$ 603.53
4200-090	12"	300	12.68-13.35	322-339	\$ 316.86	\$ 603.53
4200-095	12"	300	13.07-13.74	332-349	\$ 316.86	\$ 603.53
4200-100	14"	350	14.72-15.39	374-391	\$ 749.11	\$1,052.69
4200-105	16"	400	15.35-16.15	390-410	\$ 749.11	\$1,052.69
4200-110	16"	400	16.45-17.12	418-435	\$ 796.55	\$1,119.44
4200-112	16"	400	17.40-17.80	442-452	\$ 852.51	\$1,119.44
4200-120	18"	450	18.74-19.41	476-493	\$ 852.65	\$1,198.36
4200-130	20"	500	20.75-21.42	527-544	\$ 962.84	\$1,353.12
4200-140	24"	600	24.80-25.47	630-647	\$1,060.11	\$1,489.69

2113 W. 30th Street, Jacksonville, FL 32209

Tel: (877) 766-4459

Fax: (877) 766-4458

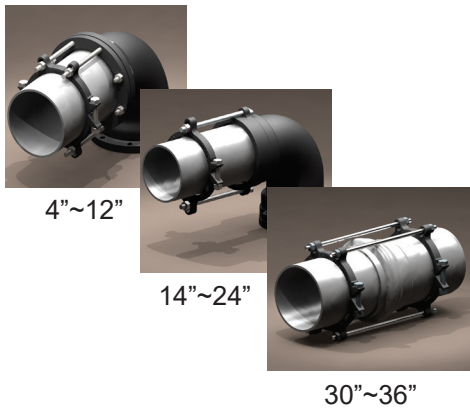
www.unitedwaterproducts.com

UNIFIT
Couplings, Adapters & Restraints

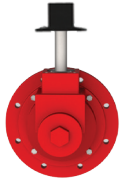


Wide Range Adapters

Part No.	Flange Inch	Flange DN	Range Inch	Range mm	List Price w/Carbon Steel Bolts	List Price w/Stainless Steel Bolts
4428-025	2"	50	2.32-2.84	59-72	\$96.60	\$ 143.26
4428-030	2-1/2"	65	2.84-3.35	72-85	\$125.92	\$ 179.50
4428-035	3"	80	3.46-4.06	88-103	\$128.05	\$ 183.40
4428-040	4"	100	4.29-5.04	109-128	\$134.18	\$ 188.60
4428-045	5"	125	5.20-5.75	132-146	\$181.75	\$ 260.40
4428-050	5/6"	125/150	5.43-6.02	138-153	\$185.75	\$ 264.40
4428-055	6"	150	6.26-7.16	159-182	\$185.75	\$ 264.40
4428-060	6"	150	7.60-8.26	192-210	\$185.75	\$ 264.40
4428-065	8"	200	8.58-9.25	218-235	\$260.10	\$ 365.95
4428-075	10"	250	9.84-10.51	250-267	\$344.44	\$ 484.34
4428-080	10"	250	10.70-11.38	272-289	\$344.44	\$ 484.34
4428-085	12"	300	12.40-13.07	315-332	\$407.07	\$ 625.60
4428-090	12"	300	12.68-13.35	332-339	\$407.07	\$ 625.60
4428-100	14"	350	17.72-15.39	374-391	\$925.66	\$1,301.90
4428-105	16"	400	15.35-16.14	390-410	\$1,115.38	\$1,559.50
4428-110	16"	400	16.45-17.12	418-435	\$1,176.18	\$1,641.60
4428-120	18"	450	18.74-19.41	476-493	\$1,395.66	\$1,955.30
4428-130	20"	500	20.75-21.42	527-544	\$1,628.22	\$2,281.20
4428-140	24"	600	24.80-25.47	630-647	\$1,937.96	\$2,710.90

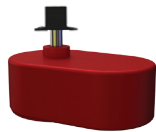


Size	Part No.	Est. Shipping Wgt. (lbs.)	List Each
4"	6190-04-C	17	\$ 59.00
6"	6190-06-C	19	\$ 78.75
8"	6190-08-C	29	\$ 127.75
10"	6190-10-C	53	\$ 220.00
12"	6190-12-C	57	\$ 243.00
14"	6190-14-C	136	\$ 523.25
16"	6190-16-C	147	\$ 590.00
18"	6190-18-C	206	\$ 730.50
20"	6190-20-C	263	\$1,000.75
24"	6190-24-C	406	\$1,170.75
30"	6190-30-C	601	\$2,374.50
36"	6190-36-C	672	\$2,944.25



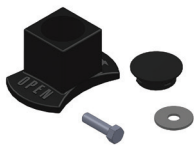
Bevel Gear Operator
(For use underground mounted on Models 1010 and 2010, NRS Gate Valves)

Size	Part No. (Open Left - Black)	Part No. (Open Left - Red)	Est. Shipping Wgt. (lbs.)	List Each
8"	4379-180-L	4379-180-R	780	\$2,845.00
10"	4379-220-L	4379-220-R	815	\$2,972.00
12"	4379-220-L	4379-220-R	815	\$2,972.00
14"	4379-260-L	4379-260-R	870	\$3,165.00
16"	4379-260-L	4379-260-R	870	\$3,165.00
18"	4379-300-L	4379-300-R	1030	\$3,755.00
20"	4379-300-L	4379-300-R	1030	\$3,755.00
24"	4379-340-L	4379-340-R	1145	\$4,182.00



Spur Gear Operator
(For use underground mounted on Models 1010 and 2010, NRS Gate Valves)

Size	Part No. (Open Left - Black)	Part No. (Open Left - Red)	Est. Shipping Wgt. (lbs.)	List Each
8"	4389-180-L	4389-180-R	780	\$2,845.00
10"	4389-220-L	4389-220-R	815	\$2,972.00
12"	4389-220-L	4389-220-R	815	\$2,972.00
14"	4389-260-L	4389-260-R	870	\$3,165.00
16"	4389-260-L	4389-260-R	870	\$3,165.00
18"	4389-300-L	4389-300-R	1030	\$3,755.00
20"	4389-300-L	4389-300-R	1030	\$3,755.00
24"	4389-340-L	4389-340-R	1145	\$4,182.00



2" Square Operating Nut with Bolt & Washer
(for Models 1010 & 2010, NRS Gate Valves)



Handwheel with Bolt & Washer
(for Models 1010 & 2010 NRS Gate Valves)

Size	Part No. (Open Left - Black)	Part No. (Open Right - Red)	Wgt. (lbs.)	List Each (Spare Part)
2"	OPN-120-L	OPN-120-R	1.8	\$34.00
3"	OPN-130-L	OPN-130-R	2.2	\$34.00
4"	OPN-140 L	OPN-140 R	2.2	\$34.00
6"	OPN-160-L	OPN-160-R	2.4	\$34.00
8"	OPN-180-L	OPN-180-R	2.6	\$40.00
10"	OPN-200-L	OPN-200-R	2.6	\$40.00
12"	OPN-220-L	OPN-220-R	2.6	\$40.00
14"	OPN-240-L	OPN-240-R	3	\$40.00
16"	OPN-260-L	OPN-260-R	3	\$40.00
18"	OPN-280-L	OPN-280-R	5	\$75.00
20"	OPN-300-L	OPN-300-R	5	\$75.00
24"	OPN-340-L	OPN-340-R	5	\$75.00

Size	Part No. (Open Left - Black)	Part No. (Open Right - Red)	Wgt. (lbs.)	List Each (Spare Part)
2"	HW-120-L	HW-120-R	3.3	\$ 36.00
3"	HW-130-L	HW-130-R	6.6	\$ 48.00
4"	HW-140 L	HW-140 R	7.7	\$ 64.00
6"	HW-160-L	HW-160-R	9.3	\$ 86.00
8"	HW-180-L	HW-180-R	13.2	\$142.00
10"	HW-200-L	HW-200-R	24.3	\$202.00
12"	HW-220-L	HW-220-R	24.3	\$202.00
14"	HW-240-L	HW-240-R	351.0	\$351.00
16"	HW-260-L	HW-260-R	351.0	\$351.00
18"	HW-280-L	HW-280-R	488.0	\$488.00
20"	HW-300-L	HW-300-R	488.0	\$488.00
24"	HW-340-L	HW-340-R	488.0	\$488.00